

Factors associated with unmet need for support to maintain independence in later life: a mixed methods systematic review

Dr Gemma Spiers
NIHR Older People & Frailty Policy Research Unit
<https://www.opfpru.nihr.ac.uk/>

Project team:

Dr Gemma Spiers

Ms Patience Kunonga

Dr Daniel Stow

Dr Alex Hall

Dr Andrew Kingston

Ms Oleta Williams

Ms Fiona Beyer

Professor Dawn Craig

Professor Peter Bower

Professor Chris Todd

Professor Barbara Hanratty

Who could benefit from support to stay independent, but is not getting it?

Aim: To identify which factors are associated with unmet need for support to maintain independence in later life

Searches

MEDLINE
PsycINFO
CINAHL
EPISTEMONIKOS

Embase
HMIC
ASSIA

Reference lists attached to ageing datasets

Open Grey

Websites (NATCEN, NHS Digital, the Health Foundation, King's Fund)

Reference lists of included studies.

Criteria

Population: 50+, community, assisted housing.
Exc. Care home residents.

Exposure: Any factor explored in relation to unmet need

Outcome: Unmet need for support to maintain independence; any measure; binary, continuous; ADL, IADL, mobility, social care

Study design: observational, SR of qualitative data, English language; data from OECD high-income countries; no publication date limits

Screening, extraction and quality assessment (two researchers)

Factors reported in:

2+ studies

Comparable analysis
Comparable measures
Confidence intervals



Visualised in forest plot

1 study

Or 2+ studies/ no
comparable analysis,
measures or confidence
intervals



Data summary table

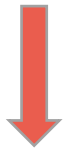
Qualitative systematic
reviews



Data summary table

Factors reported in:

2+ studies
Comparable analysis
Comparable measures
Confidence intervals



Visualised in forest plot

1 study
Or 2+ studies/ no
comparable analysis,
measures or confidence
intervals

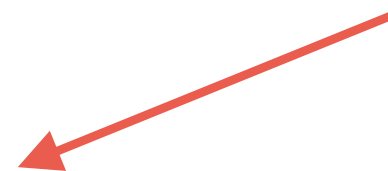
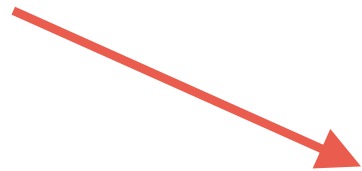


Data summary table

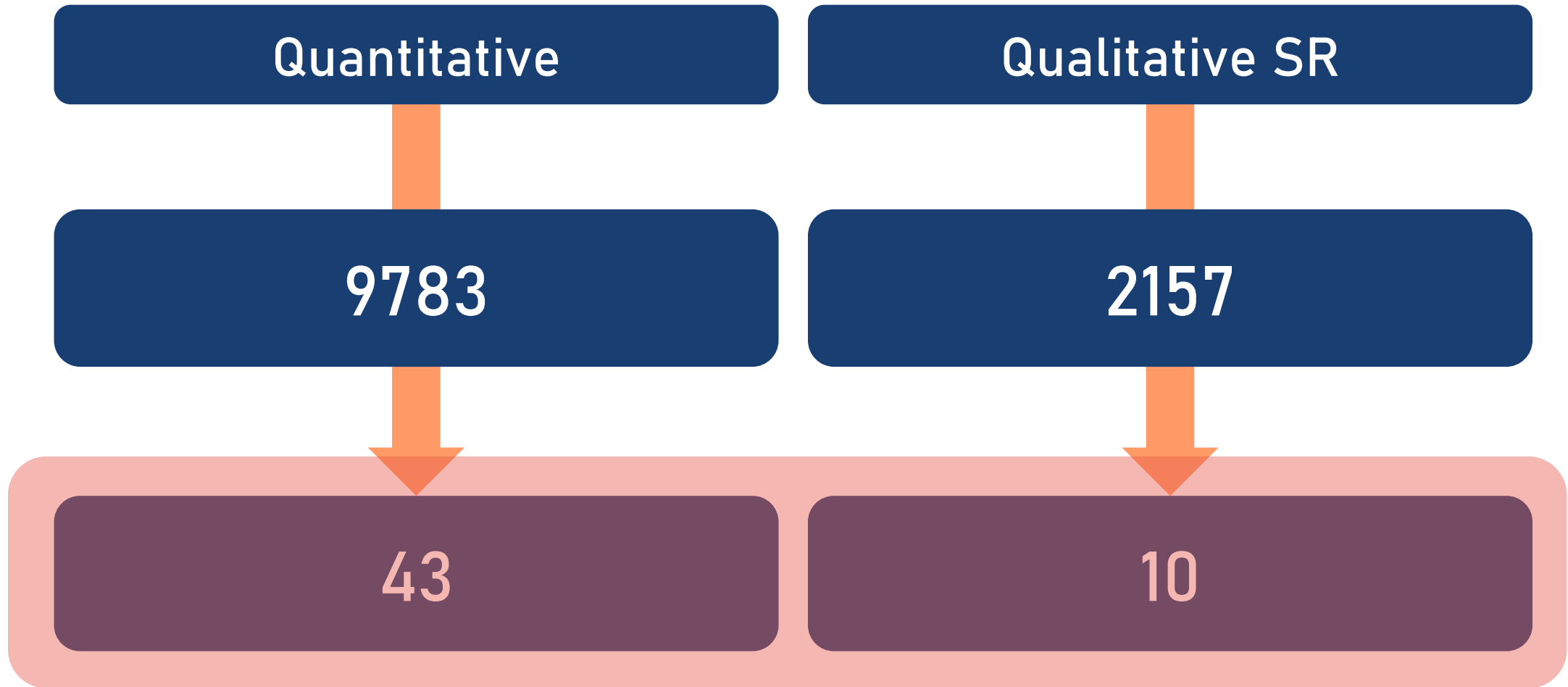
Qualitative systematic
reviews



Data summary table



Narrative synthesis



Factors

Quantitative evidence

Qualitative evidence

Demographics

✓

✓

Socioeconomics

✓

✓

Health/disability

✓

Health service use

✓

Care configurations

✓

✓

Unpaid carer characteristics

✓

Area level measures

✓

Demographic factors

Gender

Age

Living circumstances

Marital status

Ethnicity

Urban/rural geography

Proximity of friends/family

Cultural and language barriers

Demographic factors

Male

Younger age

Living alone

Marital status

Black, Hispanic, 'other' ethnicity

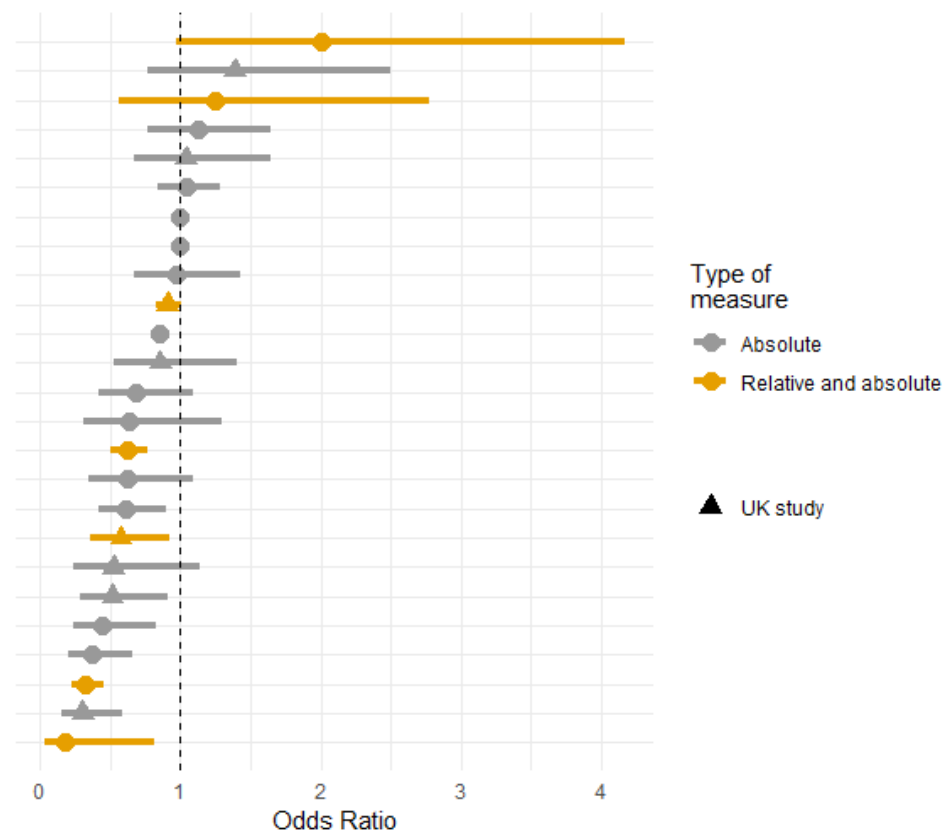
Urban/rural geography

Proximity of friends/family

Cultural and language barriers

→ Unmet Need

Study	Reference	Exposure	Outcome
Schure 2015	Lives alone	Lives with others	ADL/IADL
Vlanchantoni 2019	Other living situation	Lives in couple	IADL
Otero 2003	Lives w/children/others	Lives with spouse	ADL/IADL daily
Berridge 2018	Living alone	Living with others	Mobility
Vlanchantoni 2019	Other living situation	Lives in couple	Mobility
Berridge 2018	Living alone	Living with others	Any unmet need
Kemper 2007	Lives with child	Living with spouse	Lacking ADL help
Kemper 2007	With other persons	Living with spouse	Lacking ADL help
Berridge 2018	Living alone	Living with others	ADL
Gousia 2021	No	Child in household	Social care
Kemper 2007	Lives alone	Living with spouse	Lacking ADL help
Vlanchantoni 2019	Other living situation	Lives in couple	ADL
Casado 2011	Not living together	Living together	CBP
Casado 2011	Not living together	Living together	HBP
Wilkinson-Meyers 2013	Lives alone	Does not live alone	ADL or IADL
Casado 2011	Not living together	Living together	HWS
Berridge 2018	Living alone	Living with others	IADL
Dunatchnik 2016	Lives alone	Lives with others	ADL or IADL
Vlanchantoni 2019	Lives alone	Lives in couple	IADL
Vlanchantoni 2019	Lives alone	Lives in couple	Mobility
Casado 2011	Not living together	Living together	TRS
Casado 2011	Not living together	Living together	HDM
Kennedy 2001	Lives alone	Lives with others	ADL or IADL
Vlanchantoni 2019	Lives alone	Lives in couple	ADL
Otero 2003	Lives alone	Lives with spouse	ADL/IADL daily



Socioeconomic factors

Education

Occupation

Lower levels of income

Medicaid insurance

Housing tenure

Non-housing wealth

Mortgage

Poor quality housing

Financial constraints

Socioeconomic factors

Education

Occupation

Lower levels of income

Medicaid insurance

Housing tenure

Lower non-housing wealth

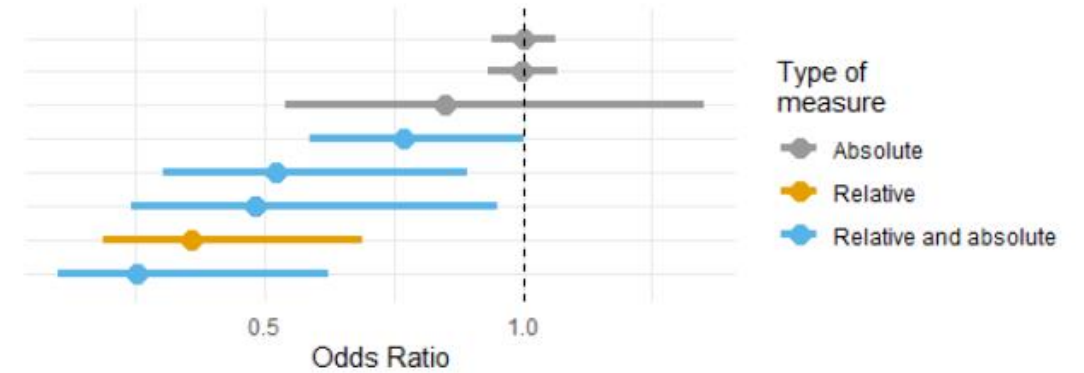
Mortgage

Poor quality housing

Financial constraints

→ Unmet Need

Study	Reference	Exposure	Outcome
Kemper 2007	Income 150-300% SSI	Income > 300% SSI	Lacking ADL help
Kemper 2007	Income < 150% of SSI	Income > 300% SSI	Lacking ADL help
Hlebec 2015	Continuous	Income (logged)	PADL/IADL
Kennedy 2001	At/below poverty level	Above poverty level	ADL or IADL
Otero 2003	<420 euros/month	>420 euros/month	ADL/IADL weekly
Otero 2003	<420 euros/month	>420 euros/month	ADL/IADL monthly
Desai 2000	Income < \$20,000	Income \$20,000+	ADL
Otero 2003	<420 euros/month	>420 euros/month	ADL/IADL daily



Health and disability factors

Self-rated health

Number of functional limitations

Number of health conditions

Greater severity of depression

Limiting illness

Number of long-term health conditions

Individual conditions

Health and disability factors

Poor self-rated health

More functional limitations

Number of health conditions

Greater severity of depression

Limiting illness

Number of long-term health conditions

Individual conditions (one UK study)

→ Unmet Need

Health service use, care configurations, unpaid carers

Unpaid carer sex

Unpaid carer age

Unpaid carer education

Unpaid carer self-rated health

Unpaid carer burden

Dental visits

Duration of unpaid caring

Unpaid caring for multiple activities

Availability and quality of care

Health service use, care configurations, unpaid carers

Unpaid carer sex

Unpaid carer age

Unpaid carer education

Unpaid carer poor self-rated health

Unpaid carer burden

Dental visits

Long duration of unpaid caring

Unpaid caring for multiple activities

Availability and quality of care

→ Unmet Need

Policy considerations

Targeting support

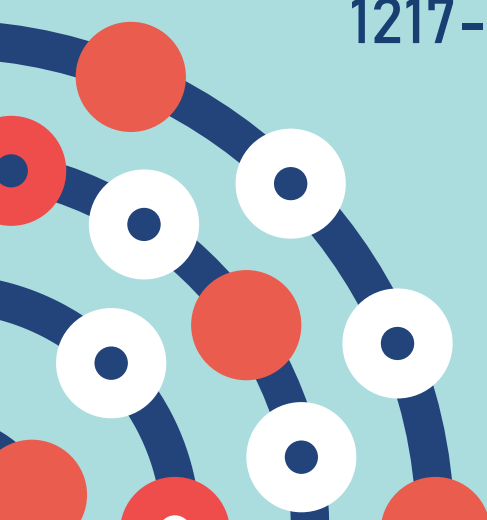
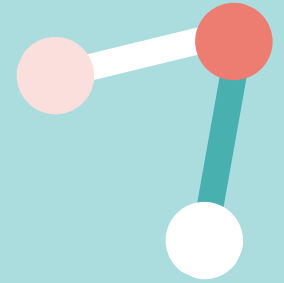
Younger age – opportunities for prevention?

Socioeconomic disadvantage

Type of unmet need measure

This report presents independent research funded by the National Institute for Health Research Policy Research Unit in Older People and Frailty. The views expressed are those of the author(s) and not necessarily those of the NIHR or the Department of Health and Social Care.

Policy Research Unit Programme Reference Number PR-PRU-1217-21502



For further details, contact:
gemma-frances.spiers@newcastle.ac.uk
anosua.mitra@newcastle.ac.uk
[@GFSpiers](https://www.opfpru.nihr.ac.uk/)
<https://www.opfpru.nihr.ac.uk/>